

INSTALLERS, SERVICE & LINE MECHANICS: PLEASE READ THIS MANUAL AND FAMILIARIZE YOURSELF THOROUGHLY BEFORE ATTEMPTING TO INSTALL OR SERVICE THE DALEMARK EQUIPMENT DESCRIBED HEREIN. FOR FURTHER ASSISTANCE, CONSULT OUR FACTORY STAFF.

INSTRUCTION AND PARTS MANUAL

SERIES 200 HEAVY DUTY CONVEYOR PRINTERS

MODEL _____

SERIAL NO. _____

When ordering, always provide the following information:

- MODEL NUMBER
- SERIAL NUMBER
- PART DESCRIPTION & PART NUMBER
AS SHOWN IN PARTS LIST

**DALEMARK INDUSTRIES, INC.
EXCEL PARK 2
575 PROSPECT ST., SUITE 211-212
LAKEWOOD, NEW JERSEY 08701
PHONE: 732-367-3100
FAX: 732-367-7031
E-Mail Address: sales@dalemark.com
Website: www.dalemark.com**

GLOSSARY

- Print Wheel:** Cylindrical unit mounted at end of printer arm.
- Tie Knots:** Plastic rings encircling print wheel, utilizing interlocking ribs for “PERMA-GRIP” type.
- “PERMA-GRIP” TYPE:** Individual alphabetical and numerical rubber type sets which lock into print wheel when inserted between tie knots. Dalemark brand name.
- Sleeve:** Optional logotype carrier which fits over print wheel in place of tie knots.
- Logotype:** One-piece message casting from special order with self-stick backing which adheres to sleeve.
- Flange Nut:** Hand tightened threaded ring at top of print wheel. Loosens tie knots for easy installation of rubber type or message changes.
- “INCA-ROL”:** Pre-inked disposable ink roller installed in juxtaposition to print wheel. Approximately 250,000 impressions. Dalemark brand name.
- “SRR”:** Self Resaturable Ink Roller, up to 1 million impressions, on-line reinking as needed. Supply of Dalemark recommended ink required. Recharge sparingly. Dalemark brand name.

OPERATING PROCEDURES

STEP 1: Mount the Printer on the desired part of your conveyor frame with 3/8" bolts through the two holes in the mounting block.

STEP 2: Mount the Printing dies on the print wheel.

A) If you are using the "Perma-Grip" dies, loosen the print wheel nut to loosen the tie knots.

Press the type into the tie knots in the proper sequence, and lock the type into place with the print wheel nut.

B) If you are using Sticky Back Dies, clean off the sticky back sleeve. Peel off the blue plastic backing from the die making sure not to remove any of the gray adhesive cloth from die. Press the die into place on the sleeve, making sure not to have any wrinkles in the backing and/or bubbles under the die.

STEP 3: Adjust the height and the depth of the Printer, when there is no carton on your conveyor. When the Unit is properly adjusted, the Printer should move approximately 1/2" on contact with the surface to be marked.

READY?

FINAL CHECKS: Does Ink Roller make kiss contact with type face?
If not, adjust by loosening the knurled nut under ink roller at base of ink roller shaft.

Has the ink roller been inked?

The Dalemark "Inca-Rol" is pre-inked and is replaced when exhausted.

An SRR roller should be inked sparingly, and test run manually until the desired density is obtained.

Is the printer shaft rigid? Bracket bolts should be tightened.

Does print wheel make contact with passing carton while overlapping the leading edge about half an inch.? Adjust this alignment by loosening mounting bolts until print wheel can be swung into position, retighten bolts. Spring tension can be adjusted by manipulating set screw in spring housing .

Have you made provision for secure, convenient storage of "Inca-Rols" or SRR's, ink supply and Dalemark Solvent?

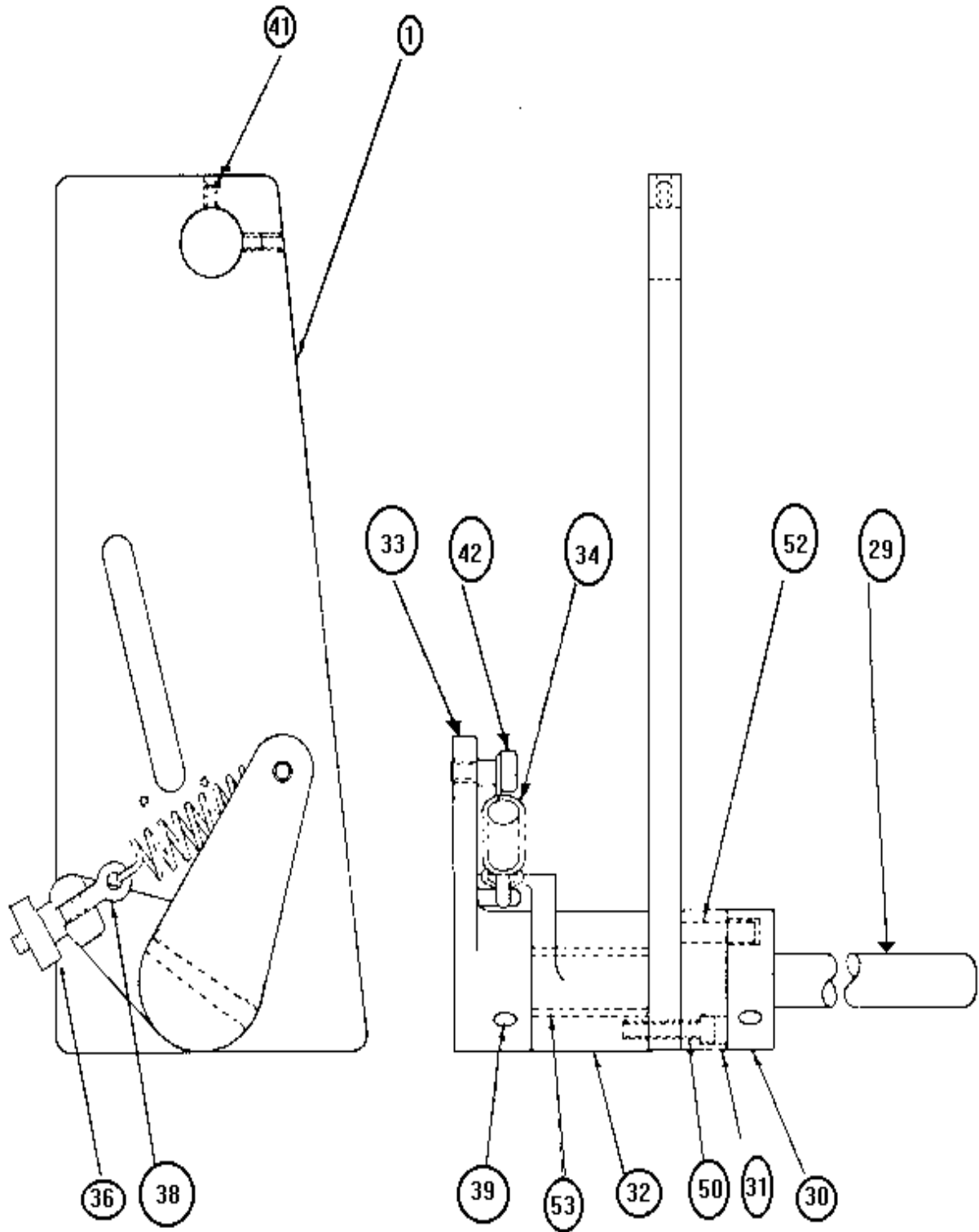
Have your made a mental note, now that installation is completed, that you will make certain this manual will be properly filed by an appropriate employee of your company? Do so.

MAINTENANCE

Cleanliness is the only key to trouble-free operation of Dalemark conveyor printers. Ink cleanup should be done with Dalemark Solvent.

Alcohol shortens the life of rubber type and logos. When printer is not in daily use, type should be kept in a cool, dry place.

On-line cleanup frequency will be dictated by printing quality. If ink is drying too quickly, experiment with small amounts of cellosolve. Too slowly? Small amounts of alcohol.

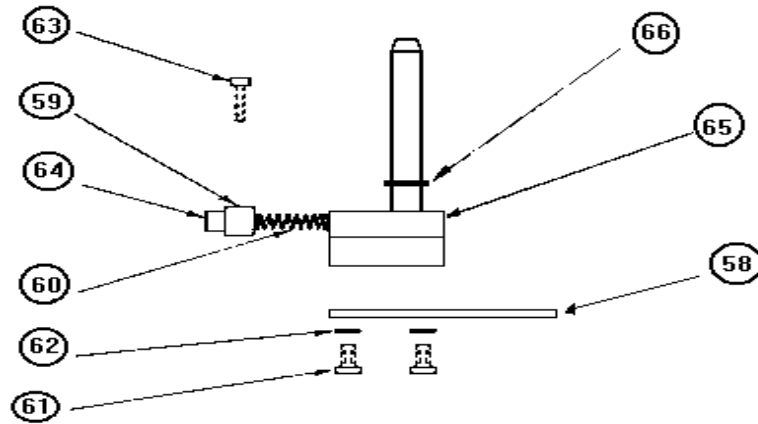


SERIES 200 FRAME ASSEMBLY

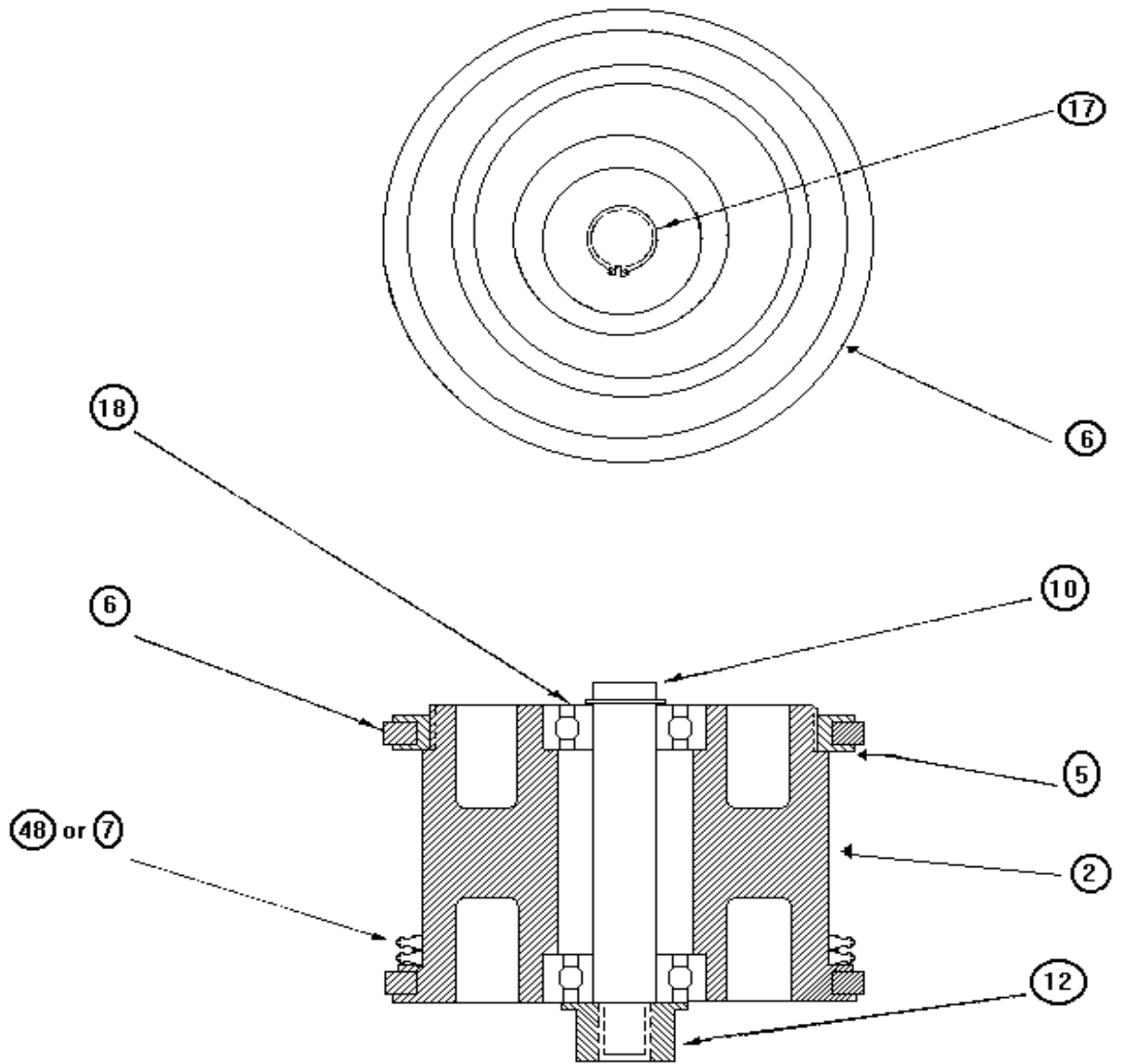
FRAME ASSEMBLY 2906

<u>Part No.</u>	<u>Item No.</u>	<u>Qty.</u>	<u>Part Name</u>
B2466	36	1	Knob, Spring Support
B2537-2	34	1	Spring, Extension
B2538	31	1	Collar, Bolt
B2539	30	1	Collar, Shaft
B2540	29	1	Shaft, Main
B2541	32	1	Spring Support, Bottom
B2543	33	1	Spring Support, Top
C2782	1	1	Mounting Plate
V0328	53	1	Bushing, Bronze
V0601-1	39	2	Dowel Pin
V0605	52	1	Dowel Pin
V3252	50	3	Screw, Cap, Soc.
V4528	41	4	Screw Set
V4906	38	1	Eye Bolt
V4923	42	1	Screw, Shoulder

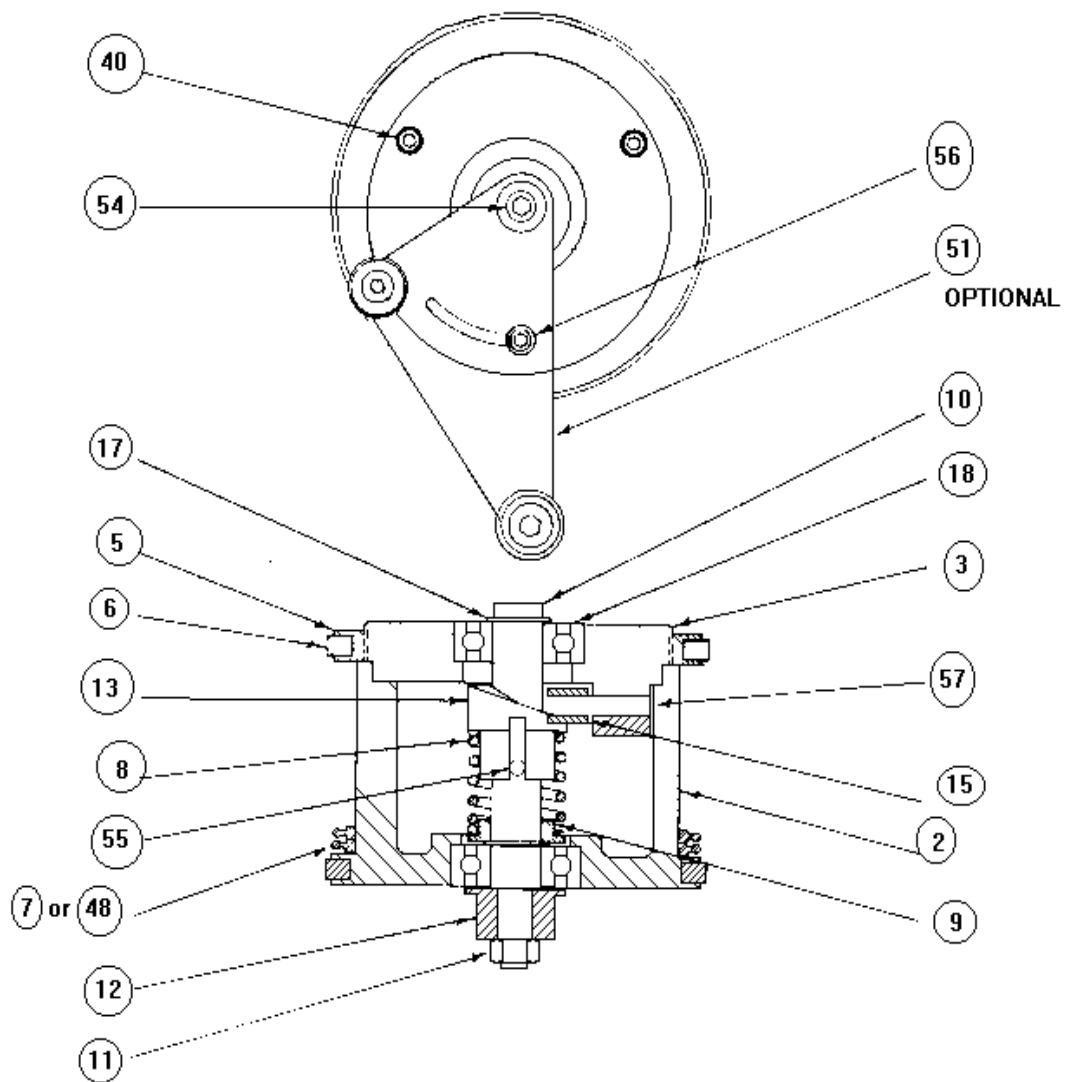
Spring Loaded Ink Roller Mount Assy. P/N 2902 Plus Model No.



<u>Part No.</u>	<u>Item No.</u>	<u>Qty.</u>	<u>Part Name</u>
B2899	59	1	Spring Block
B2900-1	60	1	Spring for Item 65
B2900-2		1	Spring for Item 65
B2901	58	1	Slide Plate
B2903-1	65	1	Mounting Block Assy.
B2903-2			Mounting Block Assy.
B2903-3			Mounting Block Assy.
V0031	62	2	Washer Lock Split
V3210	63	2	Screw Cap
V3229	64	1	Screw Cap
V3230			Screw Cap
V3231			Screw Cap
V4124	61	2	Screw Pan
V0852	66	1	Grip Ring



**200 Series HD (Continuous)
PRINT WHEEL ASSEMBLY**



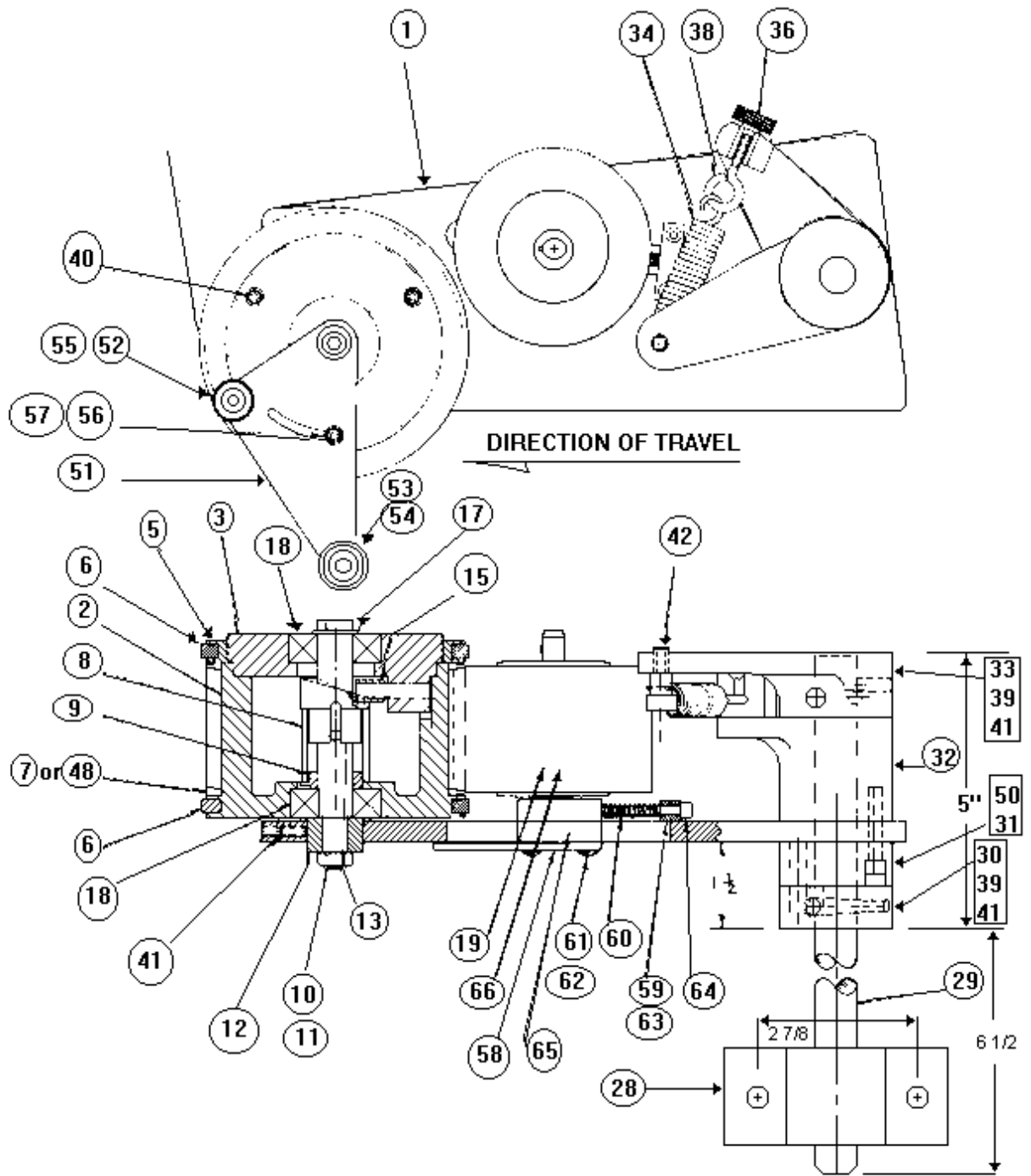
**200 Series HD (Precisely Located)
 PRINT WHEEL ASSEMBLY**

RECOMMENDED SPARE PARTS KITS
SERIES 200 CONVEYOR PRINTERS

<u>Model No.</u>	<u>Spare Parts Kit. No.</u>
HD-22	SP 5200
HD-22PL	SP 5201
HD-23	SP 5202
HD-23PL	SP 5203
HD-24	SP 5204
HD-24PL	SP 5205
HD-32	SP 5206
HD-32PL	SP 5207
HD-33	SP 5208
HD-33PL	SP 5209
HD-34	SP 5210
HD-34PL	SP 5211
HD-42	SP 5212
HD-42PL	SP 5213
HD-43	SP 5214
HD-43PL	SP 5215
HD-44	SP 5216
HD-44PL	SP 5217

Kits for the continuous units include Knob, Extension Spring, Rubber Bearers, Tie Knots, and Ball Bearings.

Kits for the precise location units include Knob, Extension Spring, Rubber Bearers, Tie Knots, P.L. Spring, Cam, Roller, Ball Bearings and Retaining Rings.



CONVEYOR PRINTER ASSEMBLY

PARTS LIST

ITEM NO.	PART NO.	MODEL	QTY.	PART NAME
1	C-2782	All	1	Mounting Plate
2	B-2849 B-2912 B-2763-1 B-2763-2 C-2858 B-3150 B-2762-1 B-2762-2 C-2860 B-3074 B-2759-1 B-2759-2	All 22 22PL 23,23PL 24,24PL 32 32PL 33,33PL 34,34PL 42 42PL 43,43PL 44,44PL	1	Body, Print Wheel
3	B-2911 B-2765 B-3151 B-2760 B-3075 B-2758	22PL 23,23PL, 24,24PL HD-32PL 33,33PL, 34,34PL HD-42PL 43,43PL 44,44PL	1	Hub, Print Wheel (Not used on 22, 32, 42)
5	B-2764 B-2761 B-2757	All 22,23,24 32,33,34 42,43,44	1	Flange Nut, Print Wheel
6 *	B-2551 B-2552 B-2780	All 22,23,24 32,33,34 42,43,44	2	Rubber Bearer, Print Wheel
7 *	B-2649 B-2650 B-2651	All 22,23,24 32,33,34 42,43,44	8,18,31 8,18,31 8,18,31	Tie Knot
8 *	B-2873-1 B-2873-2 B-2873-3 B-2873-4 B-2873-6	PL ONLY 34, 44 24 22,23 32,33 42,43	1	Spring, Print Wheel

ITEM NO.	PART NO.	MODEL	QTY.	PART NAME
9	A-2462	PL ONLY	1	Spring Bracket, Print Wheel
10	B-2850 B-2862 B-2865 B-2455 B-2871	All 22,32,42 23,33,43 24,34,44 22P,23P, 32P,33P, 42P,43P 24P,34P, 44P	1	Shaft, Print Wheel
11	V-0012	PL ONLY	1	Hex Nut, Print Wheel Shaft
12	B-2851 B-2545	Continuous PL	1 1	Bushing, Print Wheel Shaft Bushing, Print Wheel Shaft
13 *	B-2461	PL ONLY	1	Cam, Print Wheel
15 *	V-0329 V-0377	PL ONLY 22,23,24, 32,33,34 42,43,44	1	Roller, Print Wheel
17 *	V-0854	All	1	Retaining Ring, Print Wheel
18 *	V-0304	All	2	Ball Bearing
19	5A or 5B 6A or 6B 7A or 7B	All 22,32,42 23,33,43 24,34,44	1	Ink Roller (INCA-ROL or SRR)
28	B-3428	All	1	Mounting Block
29	B-2540	All	1	Shaft, Main
30	B-2539	All	1	Collar, Shaft
31	B-2538	All	1	Collar, Bolt
32	B-2541	All	1	Spring Support, Bottom
33	B-2543	All	1	Spring Support, Top
34 *	B-2537-2	All	1	Spring, Extension
36 *	B-2466	All	1	Knob, Spring Support
38	V-4906	All	1	Eye Bolt
39	V-0601-1	All	2	Dowel Pin
40	V-3917	PL ONLY	3	Screw, Print Wheel Hub
41	V-4528	All	4	Screw, Set
42	V-4923	All	1	Screw, Shoulder

ITEM NO.	PART NO.	MODEL	QTY.	PART NAME
48	B-2819 B-2822 B-2826 B-2830 B-2833 B-2836 B-2861 B-2845 B-2847	All 22,22PL 23,23PL 24,24PL 32,32PL 33,33PL 34,34PL 42,42PL 43,43PL 44,44PL	1	Sleeve, Print Wheel
50	V-3252	All	3	Screw, Cap, Soc.
51	B-3086 B-3087 B-3088	PL ONLY 22,23,24 32,33,34 42,43,44	1	Index Arm
52	V-0605	All	1	Dowel Pin
53	V-0328	All	1	Bronze Bushing
54	V-3478	All	1	Screw, Button
55	V-3246	All	1	Screw, Button
56	V-3220	All	1	Screw, Cap
57	V-0036	All	1	Washer, Flat #8
58	B-2901	All	1	Slide Plate
59	B-2899	All	1	Spring Block
60	B-2900-1 B-2900-2	All 22,23,24, 32,33,34 42,43,44	1 1	Spring for Item 65 Spring for Item 65
61	V-4124	All	2	Screw, Pan
62	V-0031	All	2	Washer Lock, Split #10
63	V-3210	All	2	Screw, Cap
64	V-3229 V-3230 V-3231	All 22,23,24 32,33,34 42,43,44	1	Screw, Cap
65	B-2903-1 B-2903-2 B-2903-3	All 22,32,42 23,33,43 24,34,44	1	Mounting Block Assy.
66	V-0852	All	1	Grip Ring

NOTES: Items 51 thru 57 are Optional!
*Included in Recommended Spare Parts Kit.