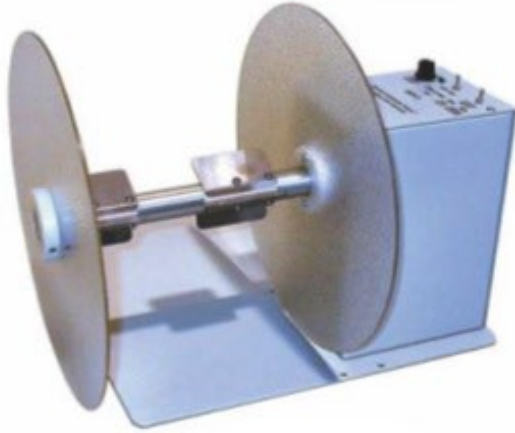


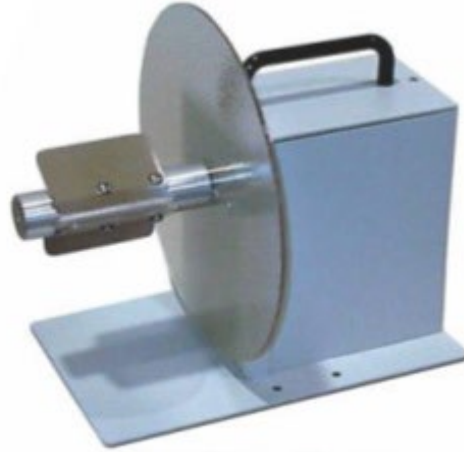


LABEL REWINDERS

SERIES
7050-LRW
DATA SHEET



Model "LRW"



Model Mini "LRW"

Features & General Specifications

Model:	"LRW"	Mini "LRW"
Shipping Weight:	30 lbs.	25 lbs.
Speed:	30 ips	10 ips
Maximum Liner Width:	6"	4.5"
Maximum roll Diameter:	12"	8.5"
Core Size:	1" or 3"	3" or Coreless
Bi-Directional:	Yes	Yes
Clutch Brake	Yes	Yes
American Made	Yes	Yes

Options for "LRW"

- 1" Core adapter
- 9.5" Width adapter
- Dancer Arm w/speed control
- 16" Roll diameter adapter
- "Quick-Chuck" For 16" Roll
- 220 VAC also available



DALEMARK
INDUSTRIES, Inc.

575 Prospect St., #211
Lakewood, New Jersey 08701-5073
Tel: 732.367.3100

fax: 732.367.7031
e-mail: sales@dalemark.com
website: www.dalemark.com



Covered under one or more of the following PAT. Nos.:

3977317	3702000	734135
3081697	3808970	4068578
3964383	946271	4037529
1512180	3140376	261056

Printed in U.S.A.
© 2024 DALEMARK
Industries, Inc.

In U.S.A.. Canada. U.K.