



HOW TO PRESERVE YOUR THERMAL PRINTER PRINTHEAD

Like with anything in life, it will eventually wear out over time. When it comes to thermal printheads, they are no exception. The lifespan of most printheads is measured in millions of linear inches printed. Simply put, the more you print, the faster the printhead will wear out and it doesn't matter what brand it is.

Factors that lead to premature printhead failure:

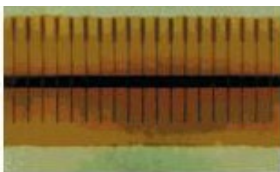
- Abrasion
- Contamination
- Corrosion
- Electrostatic Discharge (ESD)
- Residue Buildup
- Moisture

In order to help you out with maximizing the lifespan of your thermal printheads use our easy to follow advice below. No one likes to take the extra steps to clean. As it can be viewed as tedious and inconvenient but remember, it is much more tedious and inconvenient when you don't, and you end up encountering many printing problems. There will be delays and extra costs when the printhead gets clogged, become damaged and fails to perform. Take it from me, do it right the first time and make the printhead last!

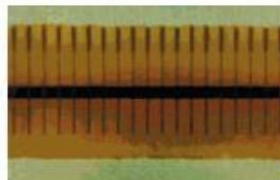
Performing basic routine preventive maintenance on your printers and keeping their environments clean goes a long way to extending the lifespan of the printhead and assures the best print quality.

Here is how a printhead should look if properly maintained.

New Printhead

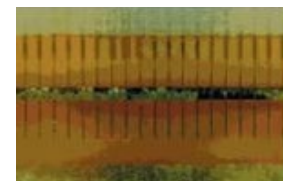


Properly Maintained Printhead
Over 1 Million Inches



Printhead Without Proper Care

Less Than 1 Million Inches
General Printhead Guidelines



Factors that lead to premature printhead failure:

- Use the proper high-quality media for your application.
- Be sure to clean all dust and particle buildup on the platen and printhead with a lint-free cloth and 90% alcohol.
- Evenly balance the printhead pressure across the media.
- Adjust your printer to the lowest print speed setting that allows for acceptable print quality.
- Monitor room temperature. Balanced room temperature is optimal.
- Use protective enclosures when in harsh environments.
- Avoid physically touching the printhead with bare hands.
- When handling the printhead, remove any clothing items or objects that could potential scratch the printhead and use a grounding strap or antistatic mat to discharge static electricity.
- Regular cleaning and maintenance schedule – at a minimum, either after every two rolls of thermal transfer ribbon or every two rolls of direct thermal labels.
- When replacing printheads carefully follow the printer maintenance manual instructions. The darkness setting and printhead pressure should be returned to the factory settings if any adjustments had been made.