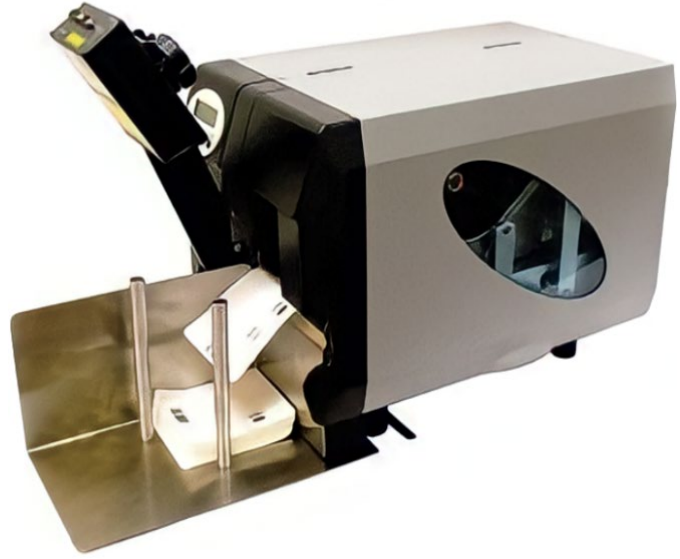




XXTREME/64xx Pouch & Card Thermal Transfer Printer

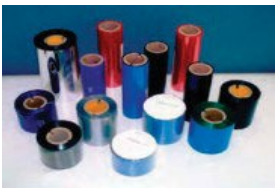
SERIES
7050-XXTREME
DATA SHEET

Thermally prints bar codes, text & logos onto pouches, hang tags, cards, tyvek lidstocks, sleeves and cut labels on demand!



Features & General Specifications

- Optional Vision/OCR System or Bar Code Reader/Verifier
- Uses No Inks or Solvents
- Works w/Ethernet, USB, or RS232
- Automatic Ribbon Save
- Feeds/Prints/Restacks Automatically
- Prints up to 300 mm's/sec at dpi.
- Includes 17 Rotatable Fonts
- Prints in Real Time
- Single Feed Design-Only Drive Motor
- American Made (Except Print Engine)
- Product width from 1.5" to 9.7"
- Print width up to 8.4" at 300 dpi
- 600m Ribbon Length
- .005" -.115" Product Thickness
- Product Stack Height up to 6"
- Product Lengths from 3" to 21"
- Machine Dimensions: 22"L x 15"W x 13"H
- Prints Bar Codes, Text, UDI, Graphics
- Compact & Portable



Thermal



575 Prospect St., #211
Lakewood, New Jersey 08701-5073
Tel: (732) 367-3100

fax: (732) 367-7031
e-mail: sales@dalemark.com
website:www.dalemark.com

Covered under one or more of the following PAT. Nos.:

3977317	3702000	734135
3081697	3808970	4068578
3964383	946271	4037529
1512180	3140376	261056

Printed in U.S.A.
© 2024 DALEMARK
Industries, Inc.



In U.S.A., Canada, U.K.