

**INSTALLERS, SERVICE & LINE MECHANICS:** PLEASE READ THIS MANUAL AND FAMILIARIZE YOURSELF THOROUGHLY BEFORE ATTEMPTING TO INSTALL OR SERVICE THE DALEMARK EQUIPMENT DESCRIBED HEREIN. FOR FURTHER ASSISTANCE, CONSULT OUR FACTORY STAFF.

## **INSTRUCTION AND PARTS MANUAL**

**SERIES 100  
CONVEYOR PRINTER  
MODEL D-1, D-2, D-3, D-10, D-11**

**SERIAL NO. \_\_\_\_\_**

When ordering, always provide the following information:

- MODEL NUMBER
- SERIAL NUMBER
- PART DESCRIPTION & PART NUMBER  
AS SHOWN IN PARTS LIST

**DALEMARK INDUSTRIES, INC.  
EXCEL PARK 2  
575 PROSPECT ST., SUITE 211-212  
LAKEWOOD, NEW JERSEY 08701  
PHONE: 732-367-3100  
FAX: 732-367-7031  
E-Mail Address: [sales@dalemark.com](mailto:sales@dalemark.com)  
Website: [www.dalemark.com](http://www.dalemark.com)**

## ————— MOUNTING —————

Dalemark Conveyor Printers are shipped for right-hand side printing operation (right side of conveyor viewing cartons moving away from printing station) unless otherwise specified. To convert to left-hand mounting, reverse round head screw and set screw in the spring housing at the junction of the mounting shaft and printing arm.

Two #10 bolts through the mounting bracket and your conveyor frame secure the printing unit. Place typical carton on conveyor at the proposed station and fully tighten mounting bolts only after setting proper print wheel height alignment to the carton. Mounting bracket also serves as a clamp for adjustable mounting shaft.

Properly mounted, print wheel will be at rest against carton, the printer arm pointing in the direction of the product flow.

Test for pressure of print wheel against carton. As a carton makes contact with a printer, the unit should be moved out of the rest position about one-half inch and return after the carton passes. Tension adjustment is a set screw with lock nut on the spring housing.

Ink roller shaft to left of print wheel is a snap-in dowel. Remove, slip an ink roller over it and replace. Roller should make a kiss contact with print wheel; no contact with tie knots. If needed, adjustment is made after type or logo is installed. To increase pressure, loosen lock nut, tighten set screw and readjust printer arm.

## ————— MESSAGE INSTALLATION —————

“Perma-Grip” Rubber Type: Assemble message from your type kit so that words spell and read backwards. If viewed in a mirror this configuration will be seen as it will print. To install, loosen flange nut at top of print wheel which loosens tie knot rings. Press the type into tie knots and lock in place by tightening flange nut.

Logotypes: If you are using a special logotype (a premolded sticky backed die), your Dalemark conveyor printer should be supplied with an aluminum sleeve in place of tie knots. The logotype is affixed to the sleeve by self adhesion.

Clean the sleeve with a quick-drying solvent. Peel away protective backing, taking care not to contaminate adhesive layer.

Press the logotype into place end to end with a rolling motion for uniform application. Wrinkles in the backing or air pockets will affect quality of imprint.

## ————— **READY** —————

FINAL CHECKS: Does ink roller make kiss contact with type face? If not, adjust by loosening knurled nut under ink roller at base of ink roller shaft.

Has ink roller been inked? The Dalemark "INCA-ROL" is pre-inked and is replaced when exhausted. An SRR roller should be inked sparingly and test run manually until the desired density is obtained.

Is the printer shaft rigid? Bracket bolts should be tool tightened.

Does print wheel make contact with passing carton while overlapping the leading edge about half an inch? Adjust this alignment by loosening mounting bolts until print wheel can be swung into proper position, retighten bolts. Spring tension can be adjusted by manipulating set screw in spring housing.

Have you made provision for secure, convenient storage of "INCA-ROL" or "SRR" ink supply and Dalemark solvent?

Have you made a mental note, now that installation is completed, that you will make certain this manual will be properly filed by an appropriate employee of your company? Do so.

## ————— **MAINTENANCE** —————

Cleanliness is the only key to trouble-free operation of Dalemark conveyor printers. Ink cleanup should be done with Dalemark Solvent. Alcohol shortens the life of rubber type and logos. When printer is not in daily use, type should be kept in a cool, dry place.

On-line cleanup frequency will be dictated by printing quality. If ink is drying too quickly, experiment with small amounts of cellosolve. Too slowly? Small amounts of alcohol.

## ———— SPARE PARTS ————

Special attention is given to your requests for spare parts. However, volume operations may want to inventory some spare parts where even brief shutdowns are costly.

Dalemark products are fully warranted as to materials and workmanship, but no company can eliminate normal wear over an extended period. We recommend the following spare parts kits, at a 10 per cent discount from individual list price, for each set of three 100-series conveyor printers owned. The kits represent insurance on parts most vulnerable to abuse, carelessness or to long-term wear.

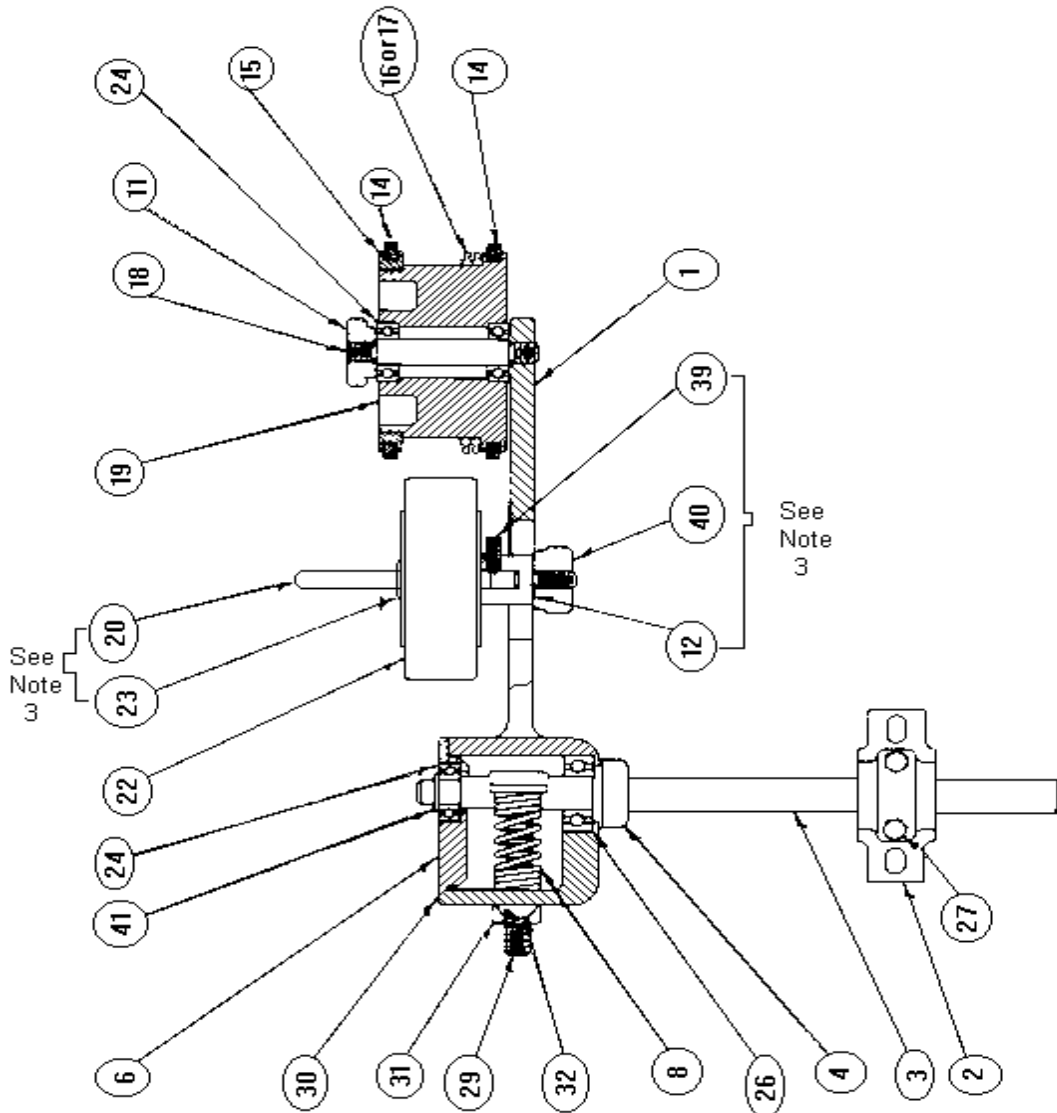
### RECOMMENDED SPARE PARTS KITS

#### SERIES 100 CONVEYOR PRINTERS

<u>Model No.</u>	<u>Spare Parts Kit No.</u>
D-1	SP-3213
D-2	SP-3214
D-2PL	SP-3218
D-3	SP-3215
D-3PL	SP-3221
D-10	SP-3216
D-11	SP-3217
D-11PL	SP-3220

For parts included in kits, see "\*" items in the Parts List.

# SERIES 100 CONVEYOR PRINTER ASSEMBLY MODEL D-1, D-2, D-3, D-10, D-11



**PARTS LIST MODEL D-1, D-2, D-3, D-10, D-11**

<b>MODEL</b>	<b>ITEM NO.</b>	<b>PART NO.</b>	<b>QTY</b>	<b>DESCRIPTION</b>
All	1	C-2810	1	Printer Arm
All	2	B-2774	1	Mounting Block
All	3	B-2751	1	Support Shaft
All	4	V-0151	1	Collar
All	6	B-2522	1	Cover (cannot be supplied separately. Comes with Assembly C-2810 - See Item 1).
1,2,3 10,11	8 *	B-2882-2 B-2882-1	2 2	Spring (heavy) Spring (light)
All	11 *	B-2767	1	Knurled Nut
All	12	B-2818	1	Ink Roller Cam
1,2,3 10,11	14 *	B-2768 B-2915	2 2	Rubber Bearer 10" Rubber Bearer 6"
1,2,,3 10,11	15	B-2769 B-2812	1 1	Flange Nut 10" Flange Nut 6"
1 2 3 10 11	16 *	B-2770 B-2770 B-2770 B-2653 B-2653	4 8 18 4 8	Tie Knot 10" Tie Knot 10" Tie Knot 10" Tie Knot 6" Tie Knot 6"
2 3 10 11	17	B-2159 B-2166-3 B-2813 B-2813-2	1	Print Wheel Sleeve (Optional in place of Tie Knots)
1,10 2,11 3	18	B-2772 B-2775 B-2801	1	Print Wheel Shaft
1 2 3 10 11	19	B-2728 B-2794 B-2795 B-2815 B-2914	1 1 1 1 1	Print Wheel Body

MODEL	ITEM NO.	PART NO.	QTY	DESCRIPTION
1,10 2,11 3	20	B-2799-1 B-2799-2 B-2799-3	1	Ink Roller Shaft
1 2 3 10 11	22	2A,2B 3A,3B 4A,4B 1A,8B 9A,9B	1	Ink Roller INCA-ROL, SRR INCA-ROL, SRR INCA-ROL, SRR INCA-ROL, SRR INCA-ROL, SRR
All	23 *	V-0851	1	Grip Ring
All	24	V-0301	3	Ball Bearing
All	26	V-0302	1	Ball Bearing
All	27	V-3240	2	Clamp Screw for B-2774
All	29	V-4538	1	Threaded Rod (set screw), Socket head 5/16"-18 X 1 3/4" long
All	30	V-4302	2	Flat Head Screw
All	31	V-0027	1	Jam Nut
All	32	V-4926	1	Screw
All	39 *	V-4904	2	Ball Plunger
All	40 *	B-2756	1	Ink Cam Knob
All	41	V-0852	1	Grip Ring
1,10 2,11 3	55	B-3171-1 B-3171-2 B-3171-3	1	Ink Roller Shaft Assembly

**NOTES:**

1. \* Indicates parts included in Spare Parts Kit
2. Item 8: For Models D-1, D-2, and D-3, the Heavy Spring, Part No. 2882-2, is standard, but customer may order Light Spring (Part No. B-2882-1) if less Print Wheel pressure is desired.
3. Item 55: is a complete Ink Roller Shaft Assembly consisting of one each of Items 12, 20, 23, 39, and 40. When ordering Item 55, avoid duplication by not ordering Items 12, 20, 23, 39, and 40 separately.